

SLOTTED SET SCREWS WITH CUP POINT

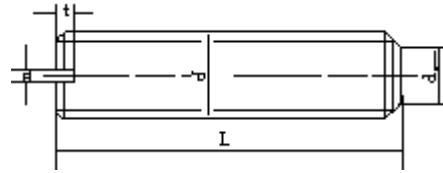
Standard: DIN438; ISO 7436

Material: Carbon Steel 12.9

DIN 438

SLOTTED SET SCREWS WITH CUP POINT

Thread Size:M3-M10, 1/4-1 in Length(L):3-30mm



(mm)

Thread Size	Pitch	dz	n	t	L
M3	0.5	1.4	0.4	0.8	3-10
M4	0.7	2.0	0.6	1.12	4-12
M5	0.8	2.5	0.8	1.28	5-16
M6	1.0	3.0	1.0	1.60	6-20
M8	1.25	5.0	1.2	2.00	8-25
M10	1.50	6.0	1.6	2.40	10-30

SLOTTED SET SCREWS WITH FLAT POINT

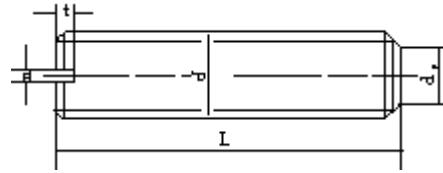
Standard: DIN551; ISO 4766;

Material: Carbon Steel 12.9

DIN 551

SLOTTED SET SCREWS WITH FLAT POINT

Thread Size:M3-M10 Length(L):3-30mm



(mm)

Thread Size	Pitch	dp	n	t	L
M3	0.5	2.0	0.4	0.8	3-10
M4	0.7	2.5	0.6	1.12	4-12
M5	0.8	3.5	0.8	1.28	4-16
M6	1.0	4.0	1.0	1.60	5-20
M8	1.25	5.0	1.2	2.00	6-25
M10	1.50	7.0	1.6	2.40	10-30

HEXAGON SOCKET SET SCREWS

Standard: DIN913,914,915,916;

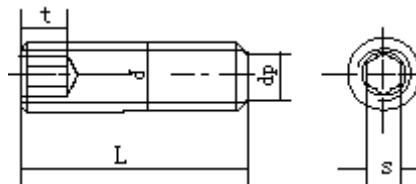
Material: Carbon Steel 12.9

DIN 913

HEXAGON SOCKET SET SCREWS

WITH FLAT POINT

Thread Size:M3-M20, Length(L):4-60mm



(mm)

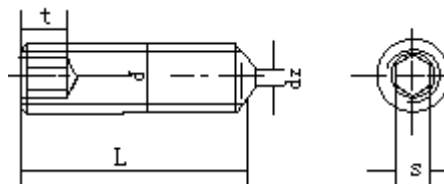
Thread Size	dp	s	t	L
M3	2.0	1.5	1.2	4-16
M4	2.5	2.0	1.5	5-20
M5	3.5	2.5	2.0	6-25
M6	4.0	3.0	2.0	8-30
M8	5.5	4.0	3.0	10-40
M10	7.0	5.0	4.0	12-50
M12	8.5	6.0	4.8	16-60
M16	12.0	8.0	6.4	20-60
M20	15.0	10.0	8.0	25-60

DIN 914

HEXAGON SOCKET SET SCREWS

WITH CONE POINT

Thread Size:M3-M20 Length(L):5-60mm



(mm)

Thread Size	dp	s	t	L
M3	-	1.5	1.2	5-16
M4	-	2.0	1.5	6-20
M5	-	2.5	2.0	8-25
M6	1.5	3.0	2.0	10-30
M8	2.0	4.0	3.0	12-40
M10	2.5	5.0	4.0	16-50
M12	3.0	6.0	4.8	20-60
M16	4.0	8.0	6.4	25-60
M20	5.0	10.0	8.0	30-60